

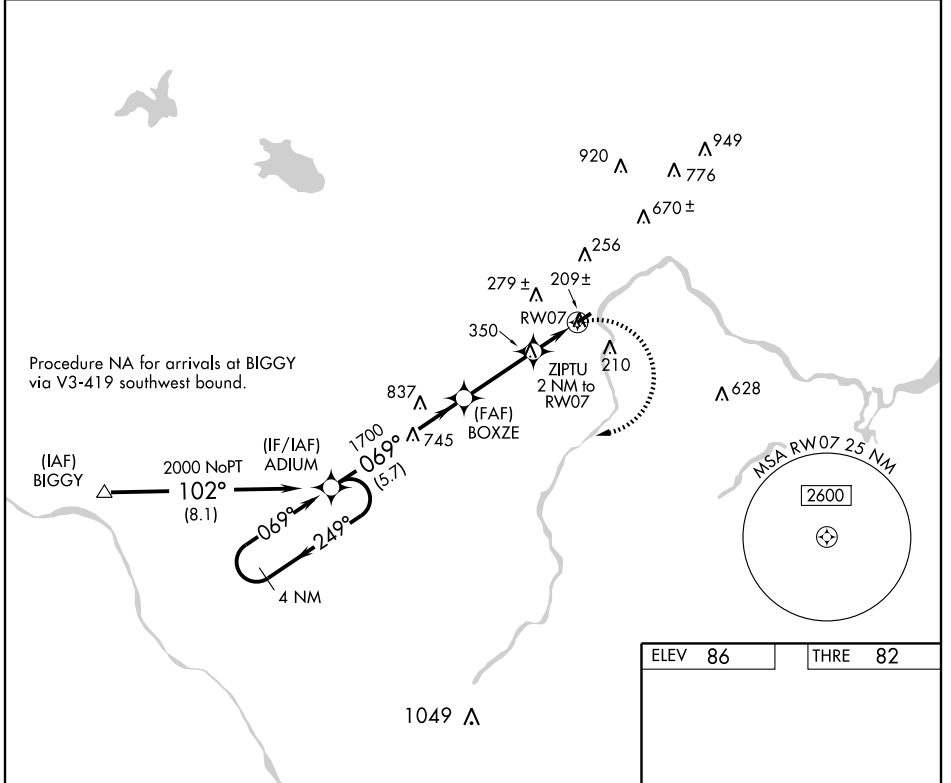
APP CRS	Rwy Idg	2930
069°	THRE	82
	Apt Elev	86

RNAV (GPS) RWY 7

MANVILLE/ CENTRAL JERSEY RGNL (47N)

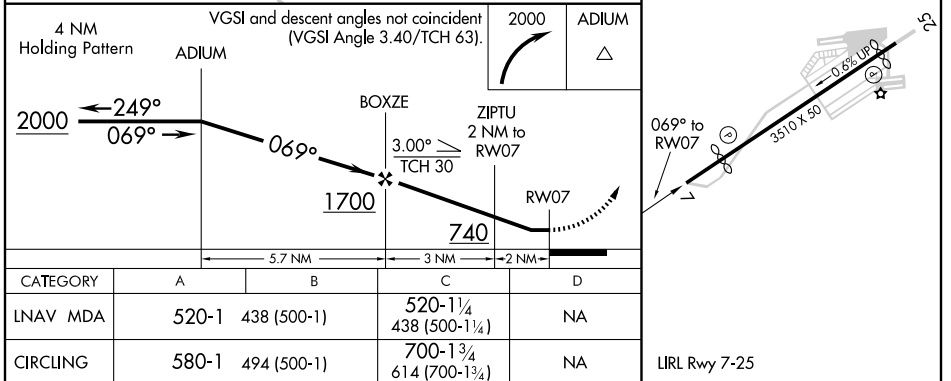
Procedure NA at night. DME/DME RNP-0.3 NA. Visibility reduction by helicopters NA. Use Trenton altimeter setting; when not received, use Newark altimeter setting, and increase all MDA 20 feet, increase LNAV Cat C visibility 1/8 mile.	MISSED APPROACH: Climbing right turn to 2000 direct ADIUM and hold.

TRENTON ASOS 126.77	NEW YORK APP CON 132.8 379.9	GCO 121.725	UNICOM 122.7 (CTAF)
-------------------------------	--	-----------------------	-------------------------------



NE-2, 25 AUG 2011 to 22 SEP 2011

NE-2, 25 AUG 2011 to 22 SEP 2011



RNAV (GPS) RWY 7